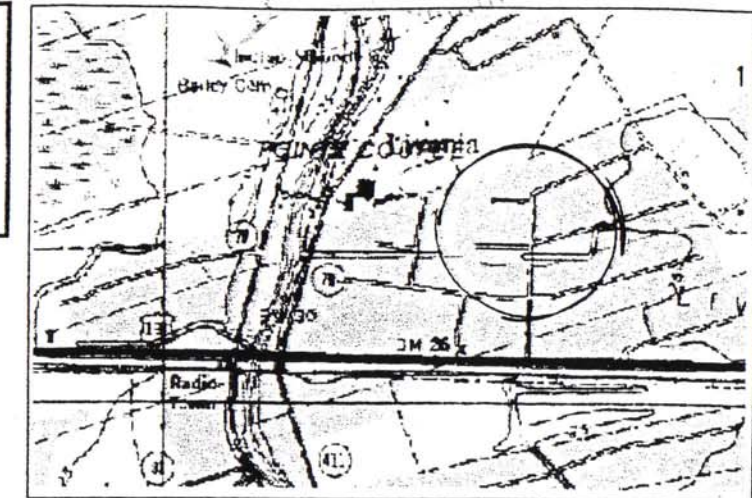
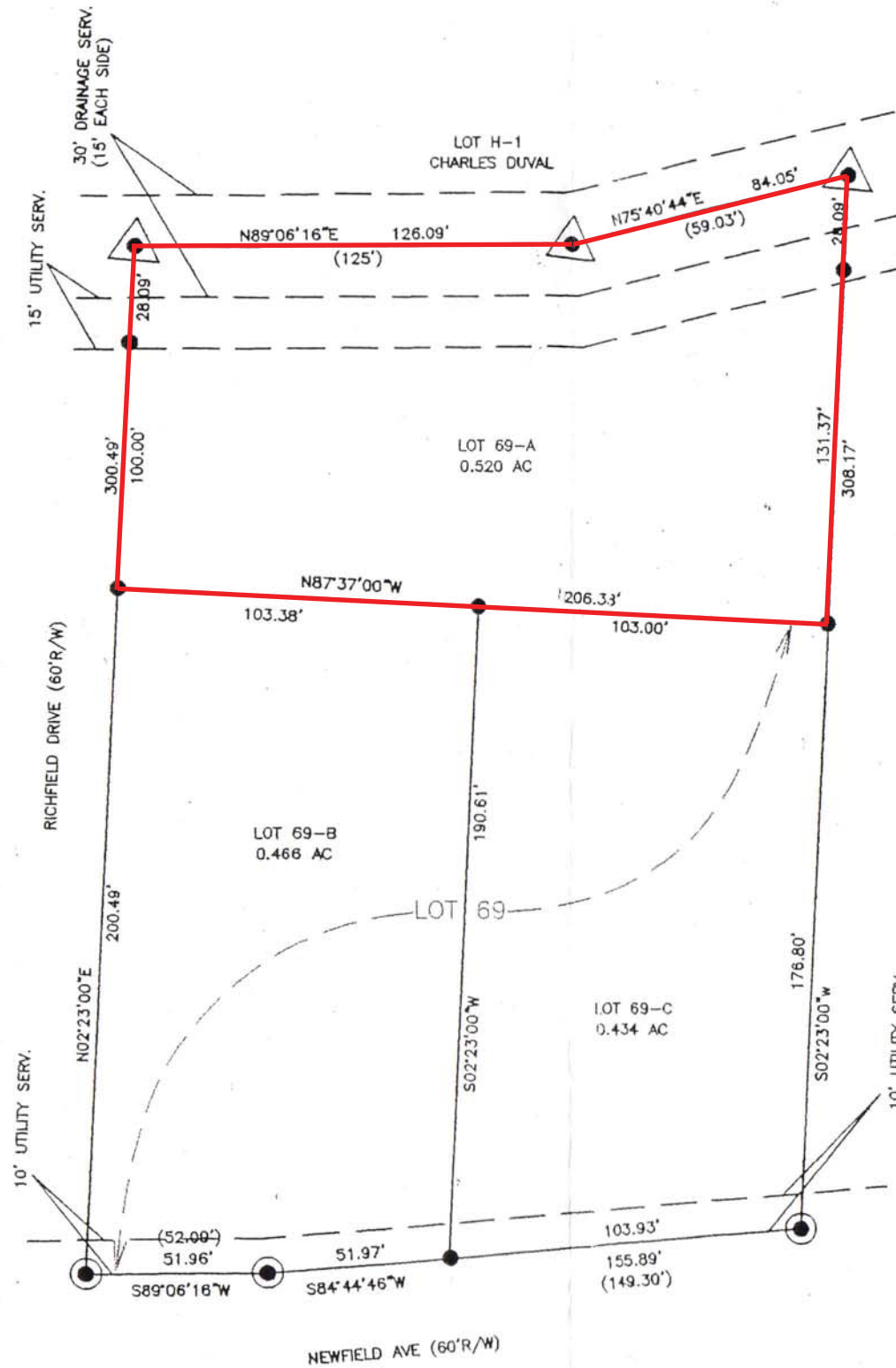


REFERENCE DRAWING

SUBDIVISION PLAT OF RICHFIELD SUBDIVISION
BY JOSEPH GARRETT.

LEGEND

- 1/2" IRON PIPE SET
- () RECORD BEARING & DISTANCE
- ⊙ 1/2" IRON PIPE FOUND
- ▶ CALCULATED POINT



VICINITY MAP NTS

NOTES

BASE BEARING (S89°06'16"W) FROM REFERENCE DRAWING.
 SURVEYED ON THE GROUND UNDER THE DIRECT SUPERVISION OF THIS SURVEYOR, IN ACCORDANCE WITH LA. "MINIMUM STANDARDS FOR PROPERTY BOUNDARY SURVEYS" AS SET FORTH IN LAC TITLE 46:LXI FOR A CLASS "C" SURVEY.
 SERVITUDES AND RESTRICTIONS FROM REFERENCE DRAWING.
 SEWAGE DISPOSAL:
 NO PERSON SHALL PROVIDE A METHOD OF SEWAGE DISPOSAL EXCEPT CONNECTION TO AN APPROVED SANITARY SEWER SYSTEM UNTIL THE METHOD OF SEWAGE TREATMENT AND DISPOSAL HAS BEEN APPROVED BY THE HEALTH UNIT OF POINTE COUPEE PARISH.

APPROVAL:
Troy Chudz 10/26/11
 MAYOR, TOWN OF LIVONIA
 TROY CHUDZ
Carl F. Whittington 10/25/11
 PARISH SANITARIAN,
 CARL WHITTINGTON



CHARLES R. ST. ROMAIN
 REG NO. 4415
 6988 ISLAND ROAD, JARREAU, LA. 70749
 225 627-5822/4030

DRAWING DATE: AUGUST 3, 2011

MAP SHOWING SUBDIVISION OF LOT 69 OF
 RICHFIELD SUBDIVISION INTO LOT 69-A,
 LOT 69-B & LOT 69-C
 FOR
 BRENT BUECHE
 SECTION 119, T-6-S R-9-E
 TOWN OF LIVONIA
 POINTE COUPEE PARISH, LA.

